

ICR HH250-6 set



Delivery content

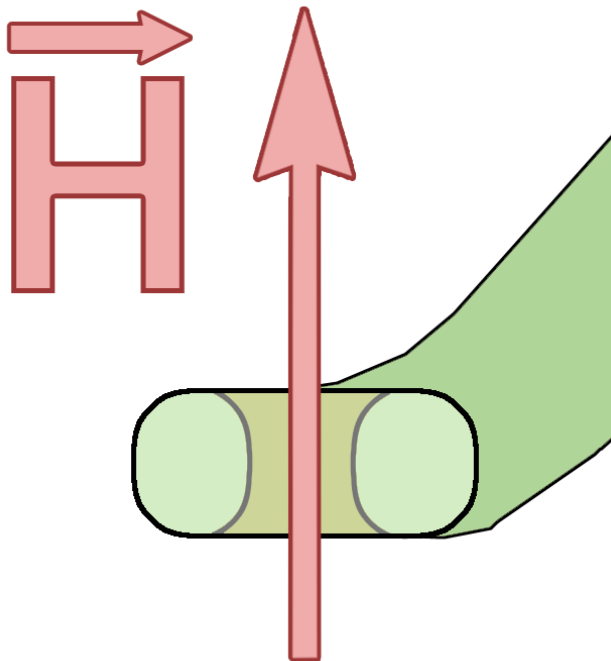
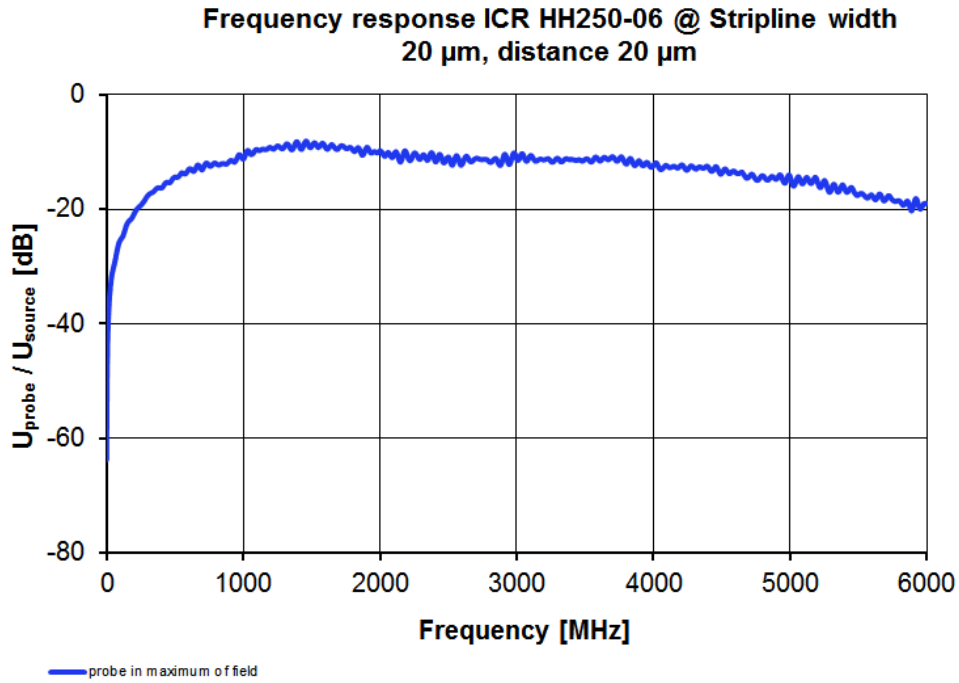
- 1x ICR HH250-6, 近场微探头 (2.5MHz-6GHz)
- 1x BT 706, T型偏置器
- 1x SMA-SMA RA
- 1x ICR-C
- 1x ICR Corr
- 1x NT FRI EU
- 1x ICR case1, System case

Technical parameters

频率范围	2.5 MHz ... 6 GHz
分辨率	150 µm
内径	250 µm

ICR HH250-6 set

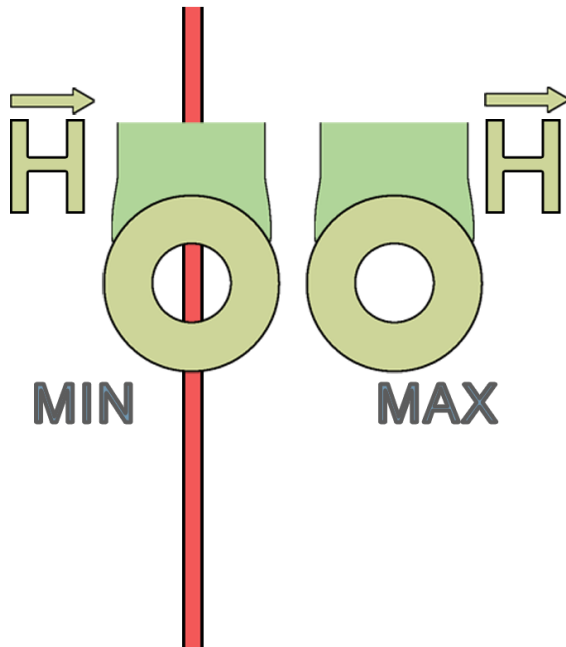
频率特性



ICR HH250-6 set

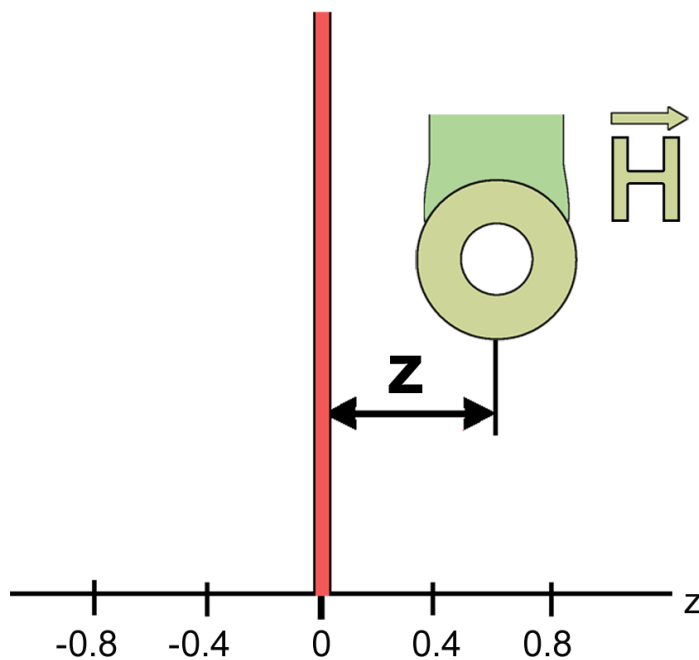
安装视图 01

Stripline



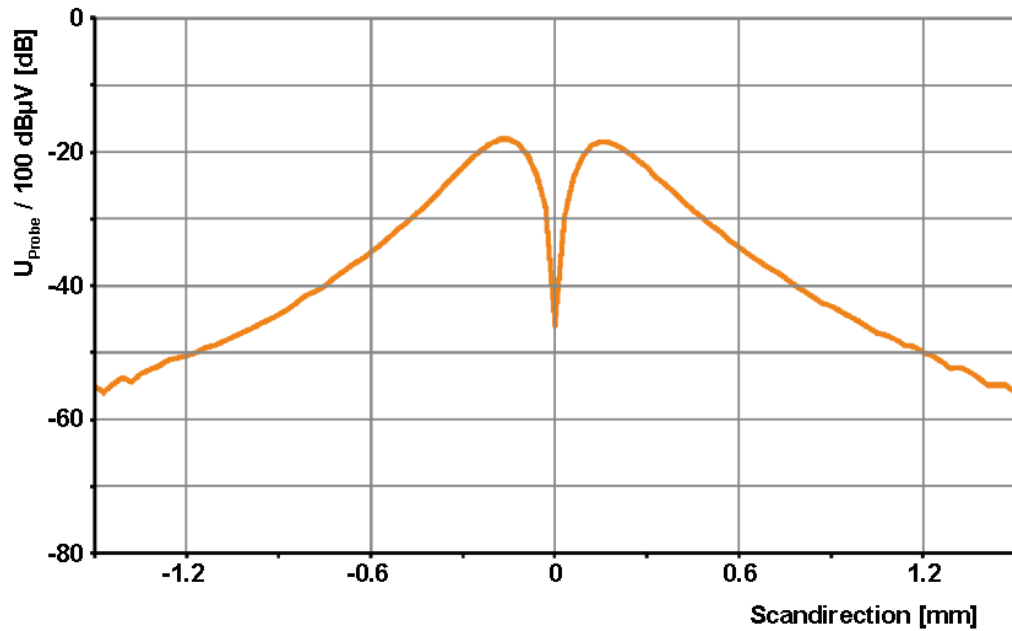
安装视图 02

Stripline



ICR HH250-6 set

横截面

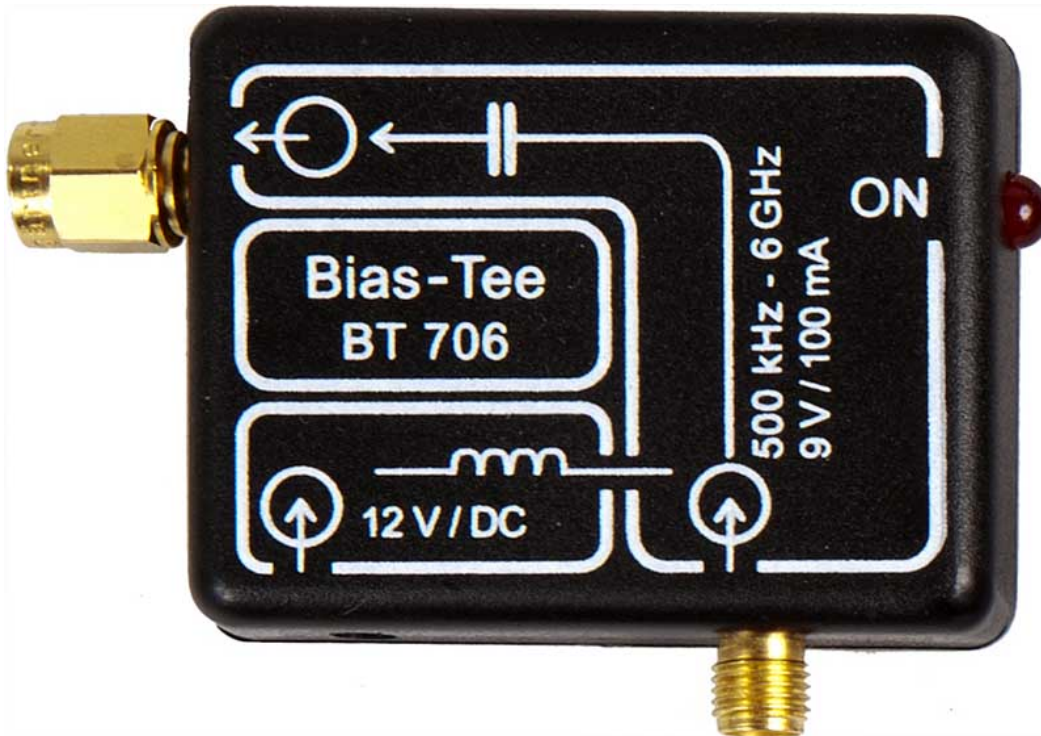


ICR HH250-6



ICR HH250-6 set

BT 706 bias tee



Scope of delivery

