

# ICR HH500-75 set



## Delivery content

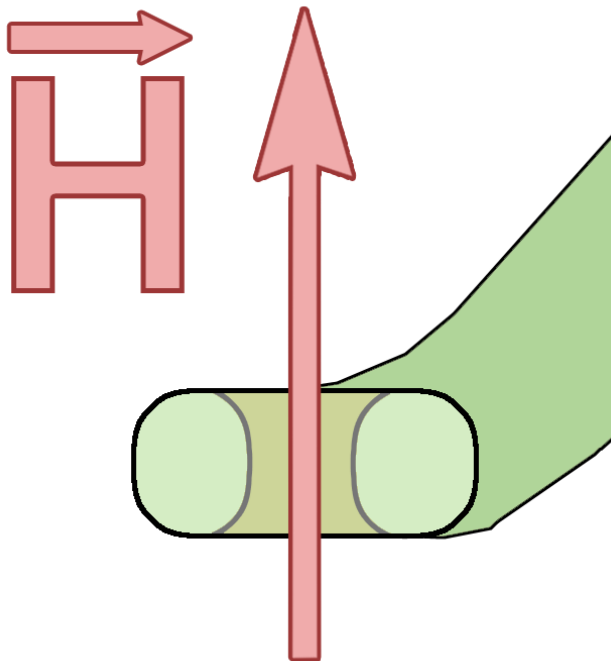
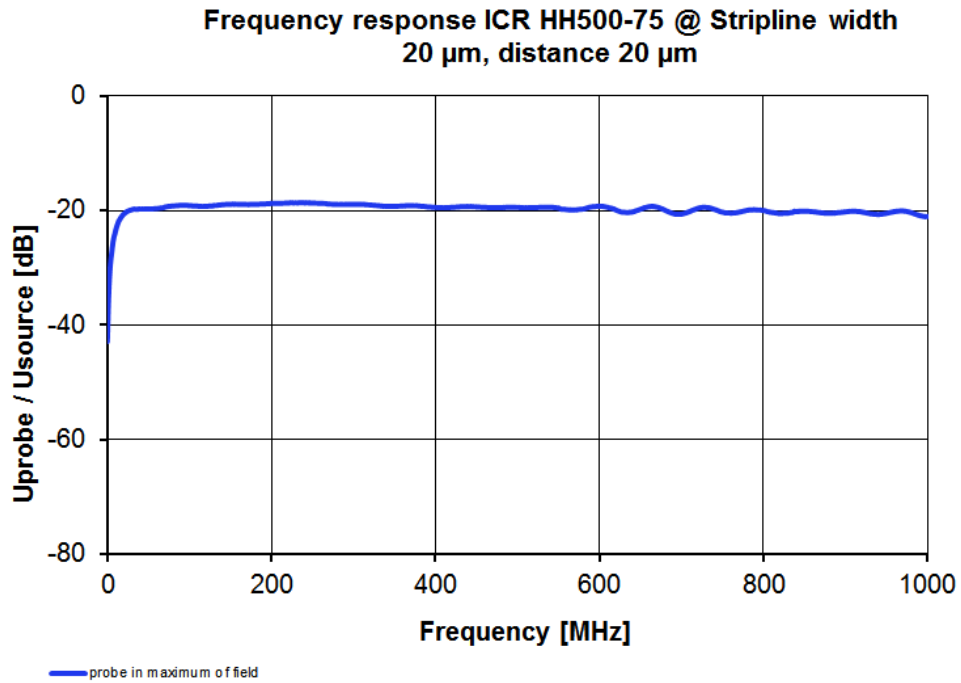
- 1x ICR HH500-75, 近场微探头 (200kHz-1GHz)
- 1x BT 706, T型偏置器
- 1x SMA-SMA RA
- 1x ICR-C
- 1x ICR Corr
- 1x NT FRI EU
- 1x ICR case1, System case

## Technical parameters

频率范围	200 kHz - 1 GHz
分辨率	300 μm
内径	500 μm

# ICR HH500-75 set

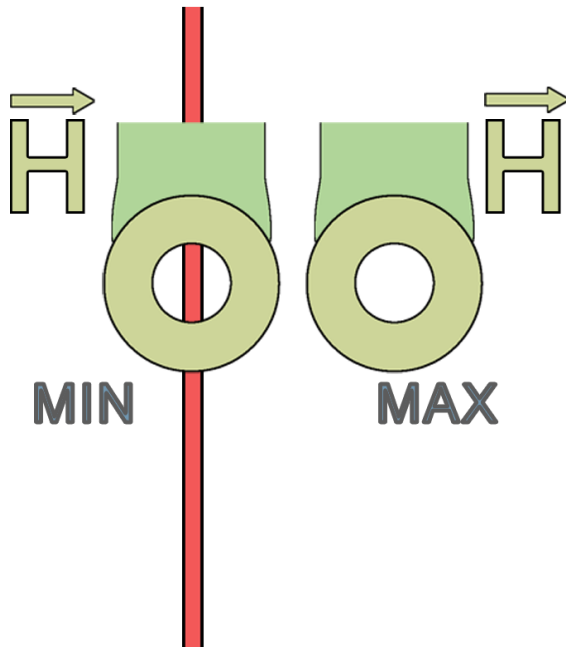
频率特性



# ICR HH500-75 set

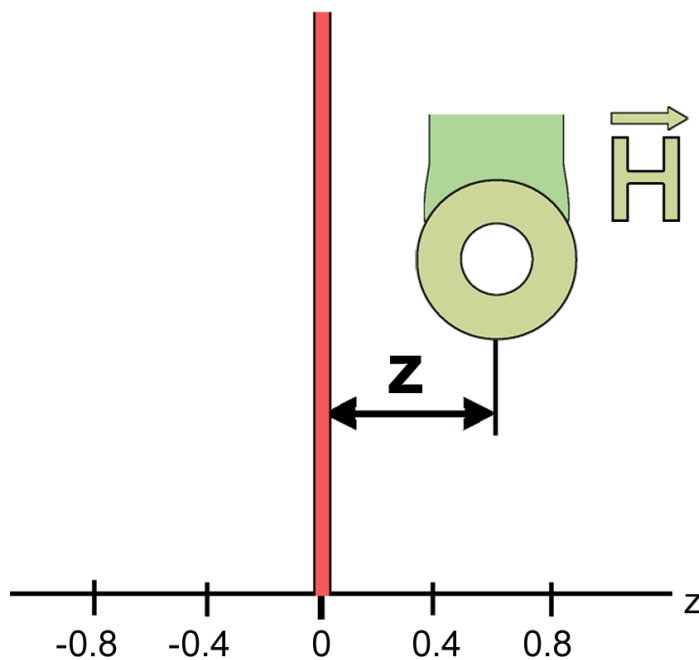
安装视图 01

## Stripline



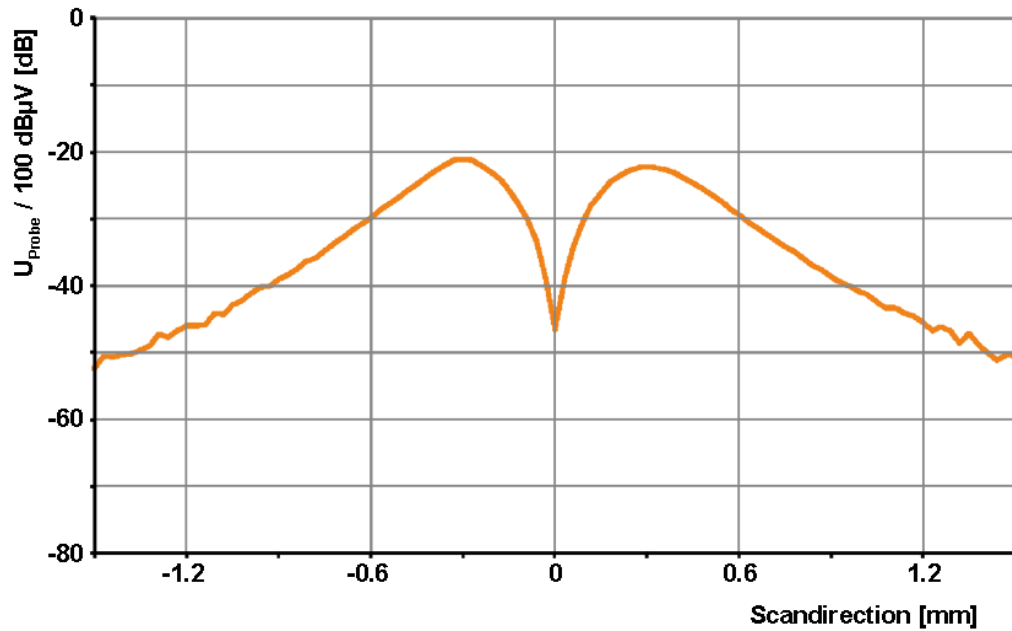
安装视图 02

## Stripline



# ICR HH500-75 set

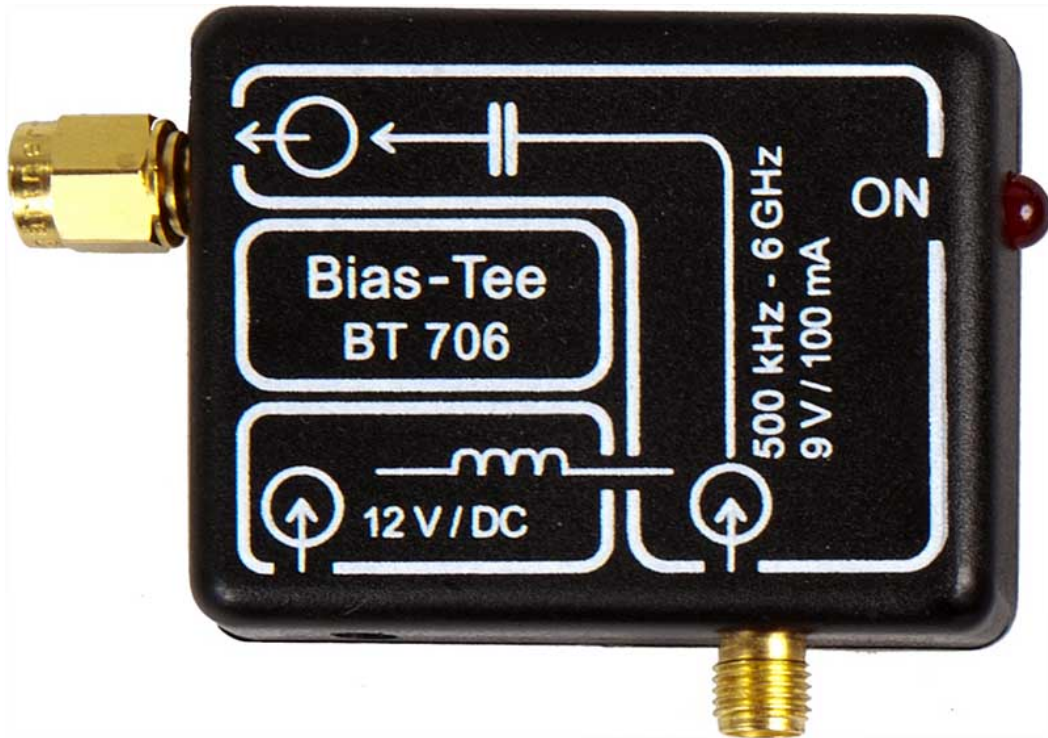
横截面



ICR HH500-75



# ICR HH500-75 set



## Scope of delivery

